

Limited Offer: Buy Gramatky Westport Watercolor Giclées to Support the WHS!

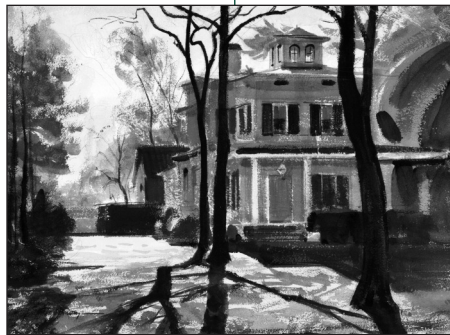
How better to celebrate the 2011 holidays than to buy glorious images of “the way Westport was” for yourself, family and friends, and—in so doing—donate to the Westport Historical Society?

For a limited time only, thanks to the extraordinary generosity of WHS members, Linda Gramatky Smith, and her husband, Ken, visit www.californiawatercolor.com, enter the special code*, and the WHS will receive 30% of your online or gift shop purchases of giclée prints of work by:

- Linda’s father, the late, great Westport artist, Hardie Gramatky,
- her mother, artist Dorothea Cooke Gramatky,
- or any other watercolorists in the catalogue.

Enjoy this opportunity to buy outstanding prints done by Hardie Gramatky, whose three original watercolors of local barns were included in last summer’s WHS “Back to Our Roots” and “Barns” exhibits.

If your knowledge of Hardie Gramatky is limited to his legendary children’s books, *Little*



Toot and *Hercules*, you will be surprised and pleased to see his stunning watercolors of familiar Westport landscapes. **Andrew Wyeth called Gramatky one of the “twenty all-time great American watercolorists”.** Choose from giclées of 38 local scenes by Hardie Gramatky, or from hundreds of others done by him, Dorothea Cooke Gramatky, or other leading watercolorists, and the WHS will still receive

From top left: Hardie Gramatky, N.A., *The Fisherman*, 1969, 11" x 14.5" - Hardie Gramatky, N.A., *Beach at Compo Sunset*, 1970, 6" x 8" - Hardie Gramatky, N.A., *Little Toot Smiling*, 1974, 7.5" x 9.75" - Hardie Gramatky, N.A., *Evening Quiet*, 1968, 16" x 22.5"

California Style Watercolors
From the Early 20th Century Through Today

CaliforniaWatercolor.com offers the very finest in museum quality archival prints on premium heavyweight watercolor paper. Please visit our website to browse an exclusive gallery of over 1000 watercolors from award-winning artists such as Millard Sheets, Dong Kingman, Ken Potter, and many more. Use the following promotional code to receive a 10% online discount, or ask the sales associate about in-store payments. Each giclée is adorned with a 1" x 3" border of textured watercolor paper and is embossed with an official California Watercolor seal of authenticity. Pricing: Large (22 x 30) \$295.00, Medium (16 x 22) \$195.00, Small (11 x 15) \$145.00.

Use promotional code WHS for a 10% discount!

www.CaliforniaWatercolor.com PO Box 1000, Fallbrook, CA 92088 760.723.9270

30%. Giclées of illustrations from Gramatky’s *Little Toot* books—a terrific gift to frame for a child’s room—also are included. And—best of all—the giclées have been reduced in price for the holidays so they range from \$95 - \$245!

What is a giclée? A very high-tech, high-quality

reproduction process that exactly replicates the color and texture of the original watercolor artwork. For most of us, only the small embossed mark in the lower corner of the work would distinguish it from the original. Examples are on display in the



WHS gift shop.

According to Linda: “These giclée prints are some of the best you can find anywhere. They are printed on heavy Provence watercolor paper and have an identical look and feel to the original paintings, so you can decorate your home—as we have—with Westport scenes or give a special holiday gift to someone who grew up in this area.”

HOW TO ORDER online:

- 1) Visit www.californiawatercolor.com
- 2) To expedite shopping, in the search box, enter “Gramatky Westport” to find all the Gramatky artwork done locally or “Gramatky” to see all his California and other watercolors done in California (he was a founder of the California Watercolor movement) or around the world.

- 3)*When you are ready to check out, BE SURE to enter the order code “WHS” to receive a bonus 10% discount and send 30% of the profits immediately to the Westport Historical Society account.

OR, ORDER through the WHS Remarkable Gift Shop:

- 1) Come visit the WHS Remarkable Gift Shop to see two matted samples and let us take your order there.

NOTE: Shipping cost for online or Gift Shop orders (quick FedEx delivery for 1-4 giclées) is \$19.95.

Remember, this offer is limited... To be sure that the WHS benefits, PLEASE **ORDER TODAY!**

Financial Focus: Charitable Giving to WHS Helps Everyone

To participate in the spirit of the holiday season, you may be considering charitable gifts. You'll no doubt enjoy helping a group like the Westport Historical Society that does valuable work.

But to begin with, it's important to understand just how necessary your gifts are to the country's social fabric. Given the effects of the Great Recession and the slow recovery, it's not surprising to learn that charitable giving fell a combined 13 percent in 2008 and 2009, after adjusting for inflation, according to The Center on Philanthropy at Indiana University. And although giving increased by 2.1 percent, again adjusted for inflation, in 2010, many groups are seeing tough times in 2011. So your gift counts.

And it can count for you, too. By contributing to a qualified tax-exempt organization (e.g., a charitable group that has received 501(c)(3) status from the IRS), you may earn valuable tax deductions. This is true whether you give cash or some other type of asset, such as stocks or real estate. And you may be able to get further tax benefits if the non-cash asset you've donated has appreciated in value since you purchased it.

Making charitable gifts now may

help you reduce your taxable estate. As you may know, the estate tax exemption level has fluctuated in recent years, so it's hard for any of us to say for sure that we won't be subjecting our estates to these taxes. However, that doesn't mean you can't take steps now to plan for possible future estate taxes.

One such step might involve establishing a *charitable remainder trust*.

Under this arrangement, you'd place some assets, such as stocks or real estate, in a trust, which could then use these assets to pay you an income stream over a certain period of time.

When you establish the trust, you may be able to receive tax benefits based on the amount the charity is likely to ultimately receive, the charitable group's so-called "remainder interest." Upon the termination of the trust, the trust would relinquish the remaining assets to the charitable organization you've named. Keep in mind, though, that this type of trust can be complex, so, to establish one, you'll need to work with your qualified tax advisor and estate planning attorney.



Another popular contribution vehicle is the "donor advised fund." Here's how it works: You give cash or appreciated securities to the donor advised fund, with the expectation of receiving a tax deduction for the contribution in that same year. You recommend what charities are to benefit from the contributions to the fund, and the fund invests and manages your contribution, along with the other assets in the fund. Again, you'll need to consult with your qualified tax advisor before establishing a donor advised fund to ensure that you will obtain any expected tax benefits.

As we've seen, you can follow different charitable giving strategies. But however you choose to make charitable gifts, you can take satisfaction in helping worthy organizations while possibly improving your own tax picture.

This article was written by Edward Jones for use by its local Financial Advisors. Edward Jones, its employees and financial advisors are not estate planners and cannot provide tax or legal advice. Please consult your estate-planning attorney or qualified tax advisor regarding your situation.

News from the WHS's Oral History Department

Did you know that a DVD's official life expectancy is just 5 years? That's why, guided by John Hartwell, the WHS's Phillip Woodruff Oral

History Center has been furiously busy not only recording new digital video interviews of eyewitnesses or contributors to Westport History, but also migrating priceless (and fascinating) older audiotape and videotape interviews to "the cloud" (pure digital storage, acces-



sible via the internet). Someday soon, you'll visit the WHS website from home, do a topic keyword search, and instantly hear relevant segments. We want your great-grandchildren able to do the same.

Recent interviews added include: Arcudi Family, Caitlin Von Schmidt, Lee Greenberg, Esta Burroughs, Bill Vornkahl, Allen Raymond with Ed See and Leo Nevas, Chuck Tannen's

Westport in the 1950s, Scott Smith's Longshore 50th Anniversary Interviews, Jo Fuchs Luscombe, Ed Vebell, Harry Audley, 50th Anniversary of Westport Sketch Class, Miggs Burroughs' talk/slide show at Rotary, Sally White, Frazier Peters site interviews with Bob Weingarten, Adam Stolpen, Laura Blau (Peters' granddaughter) and Natalie Maynard.

The O.H. Committee meets on first Thursdays, 1 pm, in the Raymond Room.